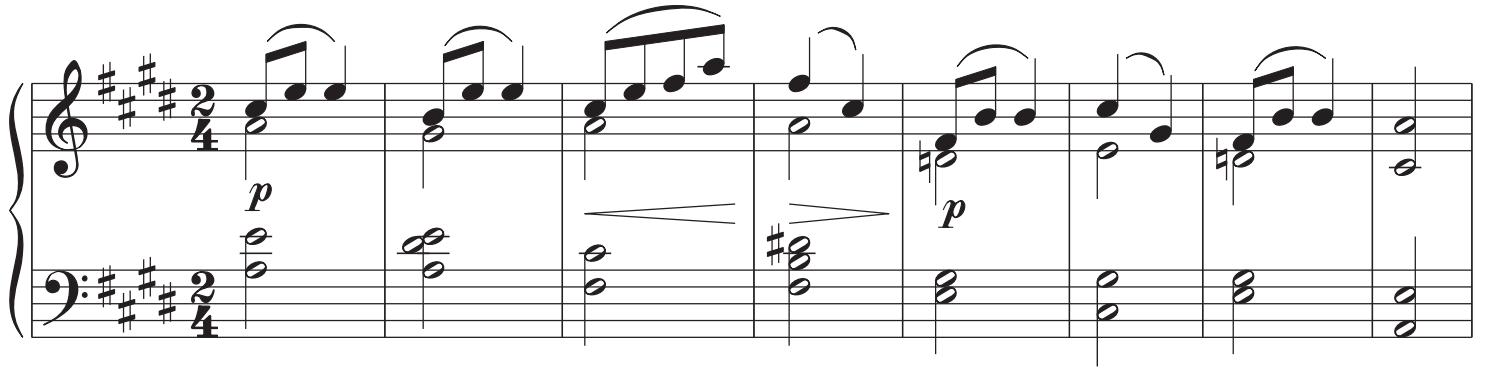
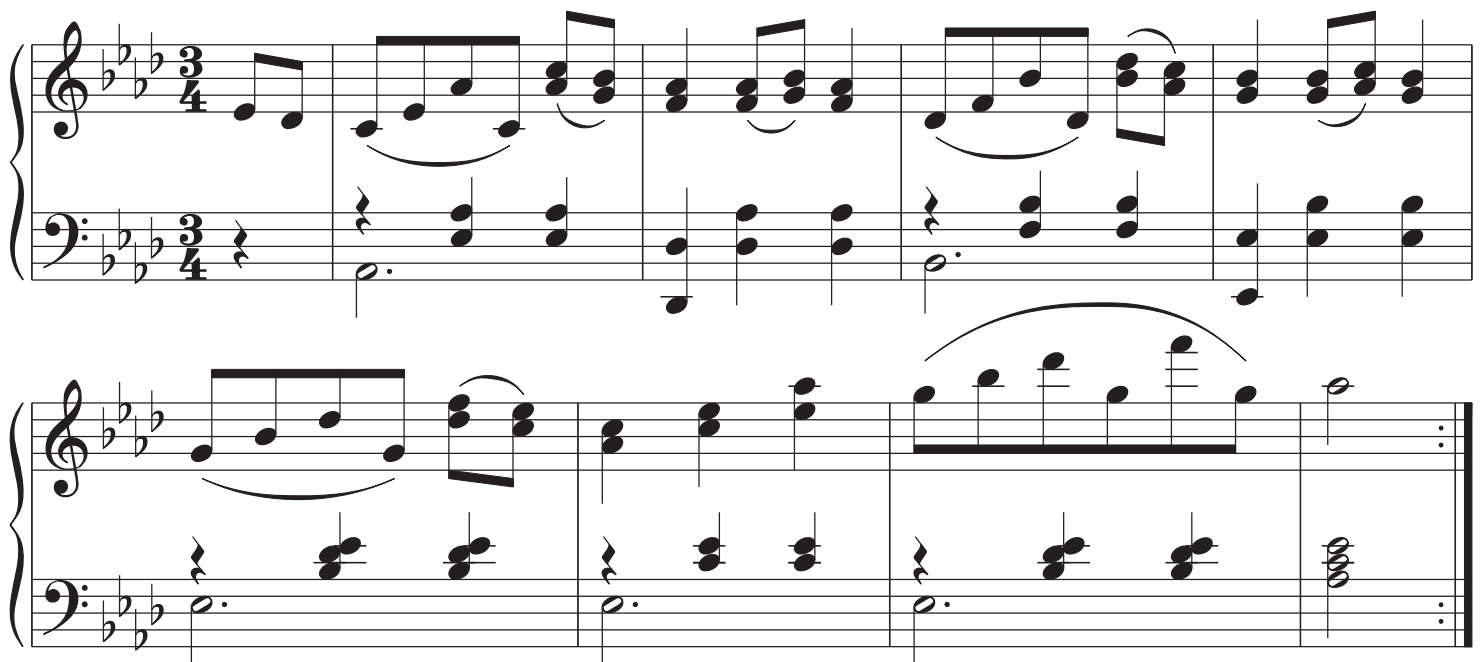


## Extra Examples to try encoding in Noteflight.



- Always encode the top voice on a staff first for easier data entry.
- To encode long slurs, the best way is to select the notes to be slured (by clicking on the first note, and shift-clicking on the last note, then pressing “s” to add the slur.
- Crescendos and decrescendos are added in a similar manner to slurs. Typing “<” will add a crescendo hairpin, and “>” will add a decrescendo hairpin.
- the piano dynamics are placed by clicking on a nearby note, then typing “ctrl-e p ↵”.



- This example utilizes all of the concepts learned in exercises 1–4.

Largo

*p* *espressivo*

- Use the “r” key when repeating chords in the bottom staff.

- For the triplet in measure 7, make sure you are highlighting a quarter rest, then press “3” to split the quarter rest into triplet eighth rests, and then type the three pitches for the triplet
- Make use of copy/paste to enter repeated patterns (including different transpositions of the same patterns, such as in the top staff, first and second measures).

*Largo*

*ff*

*Allegro moderato*

*p*

There was a farm - mer had three sons, Three

sons to him were born, And he came home tight in the middle of the night, And the

*mf*

*Moderato comodo assai e con delicatezza*

*p*

*rit.* *dim.* *pp*